

Burnable garbage

Amount of designated bag
(Garbage disposal fee)

Large 45l ¥500
Medium 30l ¥300
Small 20l ¥200

Each contains
10 sheets



Kitchen garbage



Papers



Rubber and leather



Bedding

- Be sure to put it in the town-designated burnable garbage bag and put it out by 8:00 am on the collection day.
- Each bedding should be wrapped with one designated burnable garbage bag (large) and tied up before putting it out.
- Do not put disposable diapers in a designated burnable garbage bag. Instead, remove dirt, put them in a transparent or semi-transparent bag where the contents can be seen, and write "KAMIOMUTSU (Paper diapers)" on the bag before disposal.
- Please compost your food waste or drain off excess water thoroughly before disposal. Subsidy programs are available for the purchase of food waste composters.

Non-burnable garbage



Ceramics



Glass



Metals

(Remove both disposable and rechargeable batteries from metal toys.)



Put it in a yellow container without putting in a bag. Wrap broken tableware and knives in paper, etc. Do not dispose of fluorescent tubes, disposable batteries, or rechargeable batteries in non-burnable garbage. Please take them to designated collection points.

Plastic products are not non-burnable garbage. Please put it out on the plastic collection day.

Recyclable

Do not dispose paper and cloth on rainy or snowy days. Dispose them in the morning of the day.

Most paper items can be recycled as "Mixed Paper."

Items other than categories ① to ④ are eligible.

*Cardboard, Oiled paper, Photo albums, Aluminum-lined paper (including lined juice cartons), Inkjet paper, Carbon paper (e.g., delivery slips), Catalogs, Paper noodle cups (*Must be washed and clean), Paper tape, Confectionery/Snack boxes, Paper bags, Calendars, Thermal paper (e.g., receipts), Copy paper, Stickers and labels, Photographs, Shredded paper, Detergent boxes, Paper egg cartons, Tissue boxes, Toilet paper rolls, Notebooks, Postcards (including pressure-sealed type), Paraffin paper (e.g., medicine wrappers), Pamphlets, Envelopes (including window envelopes), Waterproof paper (e.g., ice cream cups, paper plates *Must be washed and clean), Wrapping paper, Paperboard, Posters, Plastic wrap cores, Laminated paper, Washi (Japanese paper), etc.

Non-paper items: Disposable diapers, non-woven fabrics, and aluminum foil are NOT paper. Please dispose of them as Burnable garbage.
Dirty paper: Paper that is oily or stained cannot be recycled. Please dispose of it as Burnable garbage.



Papers

Separate items from ① to ⑤ and tie them with a string before disposal. As for category ⑤, you may also put them in a bag.

① Newspapers, flyers



② Magazines (books, weekly magazines, etc.)



③ Corrugated box



④ Paper (milk cartons)

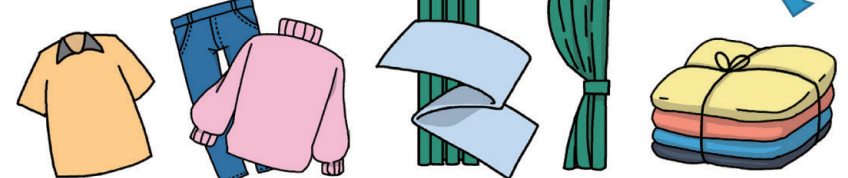


⑤ Mixed Paper



Clothes

Please tie these items with string before putting them out.



Summer clothes, yukata, jeans, towels, curtains, etc.

Aluminum/Steel



Juice, beer cans, pans, cans of canned food, etc.

Spray cans

Be sure to use up the contents, do not puncture them, and put them out in their designated places.



Gas canisters for home Cassette, etc.

Plastic PET bottles



Bottles of drinking water, soy sauce, mirin, etc.

Returnable bottles



Beer bottles, 1sho bottles

Other bottles



Juice bottles, Scratched empty bottles, condiment bottles, etc.

Medicine and cosmetic bottles should be non-burnable garbage

Please place each type of item into the blue containers. Please lightly rinse cans, bottles, and PET bottles. Please flatten PET bottles before disposal. Remove lids, caps and labels, and dispose separately. (Metal lids are non-burnable garbage, plastic lids and labels are plastic)